



CHRISTIAN
RECOVERY
CENTERS INC

2nd
THRIFT
Location!

Sunset Beach

Official Summer 2024 NEWSLETTER

In our summer newsletter, our CEO reflects on the concept of "surrender" in the recovery journey, emphasizing the power it holds for individuals seeking a new path in life. Additionally, we recap the grand opening of our new 102-bed residential recovery program at the Shallotte Campus. We are also thrilled to announce the exciting launch of our CRCI Thrift Store in Sunset Beach, expanding our reach and impact within the community. We share the enhancement to the initial stage of the CRCI program, the Motivational Track, which is now offering Substance Use treatment in partnership with Southeastern Integrated Care (SEIC) to all CRCI residents for their first 4 weeks. Time is running out to sign up for our upcoming 7th Annual Fairway to Recovery Golf Tournament. Plus, learn about the transitional program for women at our Ray Campus!





A Message From our CEO

"Surrender" is often the word you find rooted at the beginning of every recovery process. This word somehow echoes its sentiments into the hearts and minds of every addicted person when they finally believe they have become ready to take a new approach to living. Interestingly enough, this word is used by both believers and non-believers. The word echoes in the rooms of Alcohol Anonymous (AA), in many group therapy sessions, and straight back to the altar in our local churches. It is one of the words used so frequently that sometimes you

may believe it has lost its meaning. After 10 years with Christian Recovery Centers, Inc (CRCI), I have seen hundreds of various versions of how this word "surrender" looks on different individuals. Some believe that simply putting their life on hold to complete a residential recovery program is a genuine surrender, while others might say that committing themselves to a different set of principles qualifies. I am definitely not here to say who is right and who is wrong, but I do have a few observations based on my experiences.

The precursor to World War II was the Japanese attack on Pearl Harbor on the United States. The US response was, for the first time, utilizing a new invention called the atomic bomb. This bomb made its way over to its first target, Hiroshima, and upon impact, its devastation was heard around the world. The Japanese Prime Minister, after seeing its devastation, contacted President Roosevelt and explained they were ready to surrender. The Prime Minister qualified this surrender by saying they would turn their boats around and no longer pose a threat to the US. Roosevelt responded, "No deal, we are not looking for that type of surrender." He explained to the Prime Minister that he would only accept an unconditional surrender. The US would board Japanese boats and drive them back to Japan under US control, establishing US leadership in Japan. When the Prime Minister refused, the President responded with a second attack on Nagasaki. Needless to say, with the devastation caused, the Japanese white flags rolled up and stayed up. As the US began to structure leadership in Japan, the first order of business was to take control of the Japanese military. As the Japanese soldiers laid down their rifles, an astonishing thing happened. Not only did they lay down their weapons, but they also began to remove their uniforms, hats, patches, and medals. They stripped away anything that would attach them to being a Japanese soldier. It is here that I draw my comparison of what a genuine surrender looks like.

When the fight to stay true to your old lifestyle has sincerely had enough, it prompts something deeper than a finite commitment. It prompts an all-in approach to the next step in your process. I have seen hundreds of men and women take this exact approach to their recovery process. They do not enter into a place of neutrality that would mirror a pause for the cause; they enter a full state of rejection of their previous lifestyle and move away from their previous people, places, and things that once caused so much destruction. It is here I believe our friends in recovery find the transformation that God speaks about in Romans 12:2, which is activated in the process of renewing your mind. AA taught me that the same renewing of your mind can be considered as a brand new perspective from which you will now build your future. I thank God for so many individuals finding their genuine surrender here at CRCI today.

Josh Torbich, CEO
Christian Recovery Centers Inc (CRCI)



Shallotte Campus Grand Opening Recap

The rains came, but they couldn't keep our supporters from coming. Over 400 people made the trip to be a part of our ribbon-cutting ceremony for 520 Mulberry St. This new 102-bed residential recovery program received the warmest embrace from our community members. The love and support were evident throughout the day as our lineup of speakers expressed not only the importance of a facility like this one but also the gratitude they personally had for it being located in the place we all call "home."

Another milestone was reached at this event with our new Shallotte location officially securing a Campus Sponsor. One of CRCI's kind supporters was so moved by the new representation of God's love and mercy for his kids that they wanted to find a way to be more closely attached. We are pleased to announce that we will soon be having a name reveal for our new campus and our overall men's program.

It is clear that CRCI services are needed now more than ever, with the occupancy for our men's program becoming filled four months ahead of schedule. Please pray that our admissions team will be led by the spirit while working on a growing admissions list.

CHRISTIAN RECOVERY CENTERS INC THRIFT STORE *Coming Soon!*

Hello Sunset Beach! We are proud to announce that CRCI has now opened a brand new thrift location right in your neighborhood. The previous location of Sugar Kingdom has been fully converted into a 10,000 sq ft CRCI Thrift Store! The support for our already existing location in Shallotte continues to build and grow, and we are so grateful to now provide a way for us to reach into another community with this great service. CRCI views our Thrift operation as a three-way partnership with our donors/volunteers, us, and our customers. First and foremost, our kind supporters give generously of their gently used and new items. Those supporters are directly impacting residential programs, as every dollar generated by the sale of those items pours into our charitable services and helps to keep them free of charge to the participants. CRCI's commitment to our customers is evident not only in our pricing but also in our store presentation. Partnering with our customers to ensure they receive quality goods at a more affordable price is the third leg of the mission. To all those currently involved in this avenue of our ministry, we say "thank you".

If you are interested in volunteering at this new location, we are currently in need of customer service representatives who can be the warm and welcoming face to all of our visitors coming to find their treasures!

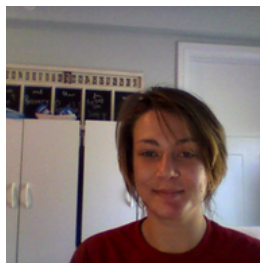
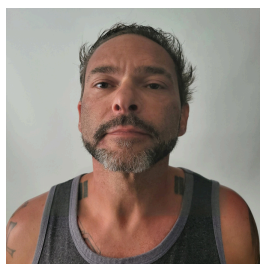
1680 Seaside Rd SW Sunset Beach, 28468

Open: June 1st 2024

Official Grand Opening / Ribbon Cutting: July 20th



INTRODUCING THE ENHANCED TREATMENT PHASE: MOTIVATIONAL TRACK WITH FULL TIME CLINICAL SUPPORT



We are thrilled to announce a significant enhancement to the initial stage of the CRCI program, the Motivational Track, which is now offering Substance Use treatment in partnership with Southeastern Integrated Care (SEIC) to all CRCI residents for their first 4 weeks. This entry phase marks a pivotal transition and is designed to provide the time and support that these residents require in an effort to increase quality of care and to decrease the potential for voluntary program dropout. During this sensitive time, residents engage daily in SACOT services - Substance Abuse Comprehensive Outpatient Treatment - which provides intensive clinical services that are personalized to the needs of each resident as they consistently engage in group and individual counseling. This service offers more clinical attention in the first four weeks than ever before, addressing both their immediate and complex detoxification needs to help them mentally, emotionally, and physically prepare for the lifestyle changes that a healthy long term recovery demands.

The Motivational Track serves as a foundation, easing residents from an unstructured lifestyle to a regimented, therapeutic environment. Here, they begin to acclimate to the program's demands at a manageable pace, learning to adhere to policies, respond positively to challenging situations, and integrate new knowledge effectively. Medications supporting the detox process are offered during this time to reduce the body's negative response to the sudden absence of chemicals on which it has become dependent.

Following this initial treatment phase, residents move into the recovery portion of the program for the next 4-6 months, which are Phases 1, 2, and 3. Each phase is designed to build upon the last, promoting personal growth and rehabilitation in a structured environment. The program culminates in the "reentry" phase, or Phase 4, preparing residents for a successful return to the community. Phase 4 offers a flexible addition of 6-18 months of program membership, which is designed to support the autonomy of these more advanced residents as they individually tailor the length of their stay based on their personal progress and the transition goals they set in Phase 3 while maintaining full time employment in the community.

The three sections of the CRCI program - Treatment, Recovery, and Reentry, provides up to two years of care for each resident, with educational and occupational offerings throughout. This structured approach ensures that each resident receives the support and care necessary to take responsibility for navigating their recovery journey successfully, from intensive clinical treatment to gradual reintegration into society as leaders within their families and local communities.



7th Annual

FAIRWAY TO RECOVERY

CHARITY CLASSIC

Presented By

Cade & Associates

Tax | Accounting | CFO

June 29, 2024

Sign in starts 7AM Shotgun
start 8:30AM

Hosted by: Carolina National Golf Club

1643 Goley Hewett Rd SE, Bolivia, NC 28422

***Early
Bird
Pricing!**

\$115

\$460 / team



Awards for 1st, 2nd, and 3rd place winners.

Raffles, food, drinks, games, and fun!



Christian Recovery Centers, Inc (CRCI) is a nonprofit network of addiction recovery centers. We offer various recovery resources, including the 12-step program and therapeutic services. Our recovery programs provide opportunities for personal growth and education, all at no cost to the residents or their families.

There are 3 ways to get involved in this event. If you're interested in any of the opportunities below, simply cut along the dotted line and return it to us by mail.

1. Volunteer with us!

Volunteer Name: _____

Phone #: _____ Email: _____

2. Sponsorship!

**Graduate
Sponsor**

- \$115 Pay for a Program Graduate to Play In Tournament!

20 + Sponsorship Levels Available!

Please email development@crcirecovery.org, visit our website, or call below to learn more!

3. GOLF!



Suan!
CRCIRECOVERY.ORG/GOLF-TOURNAMENT/



MAIL CHECK TO:
P.O. BOX 3091
SHALLOTTE, NC 28459



CALL:
(910)287-4357

Name: _____	Phone #: _____	Email: _____
Name: _____	Phone #: _____	Email: _____
Name: _____	Phone #: _____	Email: _____
Name: _____	Phone #: _____	Email: _____

CHRISTIAN RECOVERY CENTERS INC. (CRCI)

520 Mulberry St.
Shallotte, NC 28470

Prsrt Std
US Postage
PAID
Permit 16
Shallotte, NC
28459

CONNECT WITH US!



WEBSITE:
CRCIrecovery.org



FACEBOOK:
@CrcIrecovery



INSTAGRAM:
@crci_recovery



EMAIL:
OFFICE@CRCIRECOVERY.ORG



CALL:
(910)287-4357

Summer 2024



STEVE AND BECKY RAY

The Gift That Keeps on Giving

In 2019, Steve and Becky Ray donated the location that we endearingly refer to as the "Ray Campus." At it's inception this property immediately allowed us to double the men's program. This year, this property has taken a new and very important place in the CRCI ministry. After a recent facelift, the Ray Campus will now serve as a 14-bed, Phase 4 reentry program for our Rose House graduates.

This will ensure that every woman in need of transitional support receives the help promptly following the completion of our 5-7 month residential recovery program.

"I don't know if Steve and Becky ever realized how impactful their gift would continue to be. This is truly a testament and a prime example of 'the gift that keeps on giving.'" - Josh Torbich, CEO

View our Registry on



Amazon

&

Walmart



YOU ARE INVITED: RAY CAMPUS HOUSEWARMING EVENT

JUNE 8TH
& JULY 13TH

DROP IN BETWEEN
4:00 PM & 6:00 PM

1401 ASH LITTLE RIVER RD NW, ASH, NC 28420
RSVP: 910.553.6086

Search: 'Ray Campus' or scan QR code
Mail gifts to: 520 Mulberry St. Shallotte, NC 28470

Thank you!